

# Chapter 1

## Configuring Basic Connectivity

This chapter describes the settings for your Internet connection and your wireless local area network (LAN) connection. When you perform the initial configuration of your wireless router using the *Resource CD* as described in the , these settings are specified automatically for you. This chapter provides further details about these connectivity settings, as well as instructions on how to log in to the router for further configuration.



**Note:** NETGEAR recommends using the Smart Wizard™ on the *Resource CD* for initial configuration, as described in the .

This chapter includes the following sections:

- “Configuring Your Internet Connection Using the Smart Setup Wizard” on page 1-1
- “Using the Setup Manual” on page 1-2”
- “Logging In to Your Wireless Router” on page 1-2
- “Viewing and Configuring Basic ISP Settings” on page 1-5

### Configuring Your Internet Connection Using the Smart Setup Wizard

---

You can manually configure your Internet connection using the Basic Settings screen, or you can allow the Smart Setup Wizard to determine your Internet Service Provider (ISP) configuration.

The Smart Setup Wizard searches your Internet connection for servers and protocols to determine your ISP configuration. This feature is not the same as the Smart Wizard configuration assistant that appears only when the router is in its factory default state. To use the Smart Setup Wizard to assist with configuration or to verify the Internet connection settings:

1. From the top of the main menu of the browser interface, click **Setup Wizard**.
2. Click **Next** to proceed. Enter your ISP settings, as needed.
3. At the end of the Setup Wizard, click **Test** to verify your Internet connection. If you have trouble connecting to the Internet, see [Chapter 7, “Troubleshooting.”](#)

## Using the Setup Manual

---

For first-time installation of your wireless router, refer to the . The *Setup Manual* explains how to launch the NETGEAR Smart Wizard on the *Resource CD* to step you through the procedure to connect your router, modem, and computers. The Smart Wizard will assist you in configuring your wireless settings and enabling wireless security for your network. After initial configuration using the *Setup Manual*, you can use the information in this *User Manual* to configure additional features of your wireless router.

For installation instructions in a language other than English, refer to the language options on the *Resource CD*.

## Logging In to Your Wireless Router

---

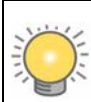
When the wireless router is connected to your network, you can access and configure the router using your browser.

To access the Web Configuration Manager:

1. Connect to the wireless router by typing **http://www.routerlogin.net** or the router's LAN IP address (the default is 192.168.1.1) in the address field of your browser, and then press Enter. A login window opens:



Figure 1-1



**Tip:** You can connect to the wireless router by typing either of these URLs in the address field of your browser, and then pressing Enter:

- <http://www.routerlogin.net>
- <http://www.routerlogin.com>

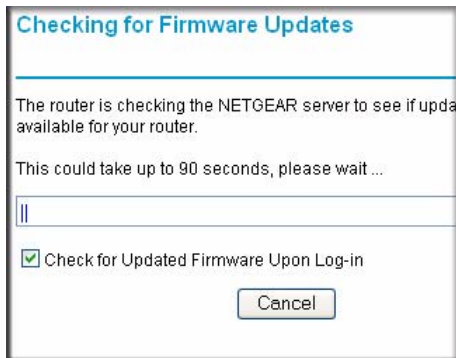
If these URLs do not work, you must type the IP address of the router, for example, <http://www.192.168.1.1>.

2. Enter **admin** for the router user name and your password (or the default, **password**). For information about how to change the password, see “[Changing the Administrator Password](#)” on page 2-14.



**Note:** The router user name and password are not the same as any other user name or password you might use to log in to your Internet connection.

The Checking for Firmware Updates screen appears unless you previously cleared the **Check for Updated Firmware Upon Log-in** check box.



**Figure 1-2**

If the router discovers a newer version of software, you are asked if you want to upgrade to the new software (see “[Upgrading the Router Software](#)” on page 6-7 for details). If no new firmware is available, the no new firmware available message displays.

3. In the main menu on the left, select **Basic Settings** under Setup. The Basic Settings screen displays showing the wireless router’s home page and suggested default settings.

**NETGEAR SMARTWIZARD** router manager  
54 Mbps Wireless Router model WGR614v9

**Setup Wizard**

**Setup**

- Basic Settings
- Wireless Settings
- Content Filtering
- Logs
- Block Sites
- Block Services
- Schedule

**Maintenance**

- Router Status
- Attached Devices
- Backup Settings
- Set Password
- Router Upgrade

**Advanced**

- Wireless Settings
- Port Forwarding / Port Triggering
- WAN Setup
- LAN IP Setup
- Dynamic DNS
- Static Routes
- Remote Management
- UPnP

**Web Support**

- Knowledge Base
- Documentation

**Basic Settings**

**Does Your Internet Connection Require A Login?**

Yes  
 No

**Account Name** (If Required)

**Domain Name** (If Required)

**Internet IP Address**

Get Dynamically From ISP  
 Use Static IP Address

IP Address

IP Subnet Mask

Gateway IP Address

**Domain Name Server (DNS) Address**

Get Automatically From ISP  
 Use These DNS Servers

Primary DNS

Secondary DNS

**Router MAC Address**

Use Default Address  
 Use Computer MAC Address  
 Use This MAC Address

**Help and Documentation**

The Basic Settings pages allow you to configure, upgrade and check the status of your NETGEAR Wireless Router.

Click an item in the leftmost column. The current settings or information for that area appear in the center column.

Helpful information related to the selected Settings page appears in this column. If you are using Internet Explorer, you may click an item in the center column to jump directly to the related help section, otherwise, scroll down until you reach it.

**Basic Settings Help**

**Note:** If you are setting up the router for the first time, the default settings may work for you with no changes.

**Does Your Internet Connection Require A Login?**

Select this option based on the type of account you have with your ISP. If you need to enter login information every time you connect to the Internet or you have a PPPoE account with your ISP, select **Yes**. Otherwise, select **No**.

**Note:** If you have installed PPP software such as WinPoET (from Earthlink) or Enternet (from PacBell), then you have PPPoE. Select **Yes**. After selecting Yes and configuring your router, you will not need to run the PPP software on your PC to connect to the Internet.


**Account Name**

(also known as Host Name or System Name)

For most users, type your account name or user name in this box. For example, if your main mail account is JerAB@ISP.com, then put JerAB in this box.

If your ISP has given you a specific Host name, then type it (for example, CCA7324-A).

Figure 1-3

 **Note:** If the **Check for New Version Upon Log-in** check box is selected, the home page is the Router Upgrade screen. Otherwise, it is the Basic Settings screen.

If the wireless router is connected to the Internet, you can select **Knowledge Base** or **Documentation** under Web Support in the main menu to view support information or the documentation for the wireless router.

If you do not click **Logout**, the wireless router will wait for 5 minutes after no activity before it automatically logs you out.

## Viewing and Configuring Basic ISP Settings

Settings related to your Internet service are specified in the Basic Settings screen. To access the Basic Settings screen, from the main menu of the router's Web Configuration Interface, under Setup, select **Basic Settings**. The content you see in the Basic Settings screen depends on whether your ISP requires that you log in with a user name and password for Internet access.

**ISP does not require login**

**Basic Settings**

**Does Your Internet Connection Require A Login?**

Yes

No

**Account Name** (If Required)

**Domain Name** (If Required)

**Internet IP Address**

Get Dynamically From ISP

Use Static IP Address

IP Address

IP Subnet Mask

Gateway IP Address

**Domain Name Server (DNS) Address**

Get Automatically From ISP

Use These DNS Servers

Primary DNS

Secondary DNS

**Router MAC Address**

Use Default MAC Address

Use Computer MAC Address

Use This MAC Address

**Figure 1-4**

- **No login required by ISP.** If no login is required by your ISP, the following settings appear in the Basic Settings screen.

- **Account Name** (might also be called Host Name). The account name is provided to the ISP during a DHCP request from your router. In most cases, this setting is not required, but some ISPs require it for access to ISP services such as mail or news servers.
- **Domain Name**. The domain name is provided by your router to computers on your LAN when the computers request DHCP settings from your router. In most cases, this settings is not required.
- **Internet IP Address**. Determines how your router obtains an IP address for Internet access.
  - If your ISP assigns an IP address dynamically (by DHCP), select **Get Dynamically From ISP**.
  - If your ISP has assigned you a permanent, fixed (static) IP address for your computer, select **Use Static IP Address**. Enter the IP address that your ISP assigned. Also, enter the subnet mask and the gateway IP address. The gateway is the ISP’s router to which your router will connect.
- **Domain Name Server (DNS) Address**. If you know that your ISP does not automatically transmit DNS addresses to the router during login, select **Use These DNS Servers**, and enter the IP address of your ISP’s primary DNS server. If a secondary DNS server address is available, enter it also.



**Note:** If you enter or change a DNS address, restart the computers on your network so that these settings take effect.

- **Router MAC Address**. This section determines the Ethernet MAC address that the router will use on the Internet port. Typically, you would leave **Use Default Address** selected. However, some ISPs (especially cable modem providers) register the Ethernet MAC address of the network interface card in your computer when your account is first opened. They then accept only traffic from the MAC address of that computer. This feature allows your router to masquerade as that computer by “cloning” or “spoofing” its MAC address. To change the MAC address, select one of the following methods:
  - Select **Use Computer MAC Address**. The router will then capture and use the MAC address of the computer that you are now using. You must be using the one computer that is allowed by the ISP.
  - Select **Use This MAC Address**, and type it in here.

If a login is required by your ISP, the following settings appear in the Basic Settings screen:

### ISP does require login

**Basic Settings**

Does Your Internet Connection Require A Login?

Yes  
 No

Internet Service Provider: Other

Login: guest

Password: [ ]

Service Name (If Required): [ ]

Connection Mode: Dial on Demand

Idle Timeout (In Minutes): 5

Internet IP Address

Get Dynamically From ISP  
 Use Static IP Address: 0 . 0 . 0 . 0

Domain Name Server (DNS) Address

Get Automatically From ISP  
 Use These DNS Servers

Primary DNS: 206 . 13 . 28 . 12

Secondary DNS: 206 . 13 . 31 . 12

Apply Cancel Test

**Figure 1-5**


- **Does Your Internet Connection Require A Login?** If you usually must use a login program such as WinPOET to access the Internet, your Internet connection requires a login. After you select **Yes**, the Basic Settings screen displays.



**Note:** After you finish setting up your router, you will no longer need to launch the ISP's login program on your computer to access the Internet. When you start an Internet application, your router will automatically log you in.

- **Internet Service Provider.** This drop-down list contains a few ISPs that need special protocols for connection. The list includes:
  - **PPTP** (Point to Point Tunneling Protocol), used primarily in Austrian DSL services


- **Telstra Bigpond**, an Australian residential cable modem service

	<p><b>Note:</b> The Telstra Bigpond setting is only for older cable modem service accounts still requiring a Bigpond login utility. Telstra has discontinued this type of account. Those with Telstra DSL accounts and newer cable modem accounts should select <b>No</b> for Does Your Internet Connection Require a Login.</p>
---	--

- **Other**, which selects PPPoE (Point to Point Protocol over Ethernet), the protocol used by most DSL services worldwide.



**Figure 1-6**

	<p><b>Note:</b> Not all ISPs are listed here. The ones on this list have special requirements.</p>
---	--

- **Login and Password.** This is the user name and password provided by your ISP. This name and password are used to log in to the ISP server.
- **Service Name.** If your connection is capable of connecting to multiple Internet services, this setting specifies which service to use.
- **Connection Mode.** This drop-down list (shown in [Figure 1-5 on page 1-7](#)) selects when the router will connect to and disconnect from the Internet. The list includes:
  - **Always On.** The router logs in to the Internet immediately after booting and never disconnects.
  - **Dial on Demand.** The router logs in only when outgoing traffic is present and logs out after the idle time-out.
  - **Manually Connect.** The router logs in or logs out only when the user clicks **Connect** or **Disconnect** in the Router Status screen.
- **Idle Timeout.** Your Internet connection is logged out if there is no data transfer during the specified time interval.

- **Domain Name Server (DNS) Address.** If you know that your ISP does not automatically transmit DNS addresses to the router during login, select **Use These DNS Servers**, and enter the IP address of your ISP's primary DNS server. If a secondary DNS server address is available, enter it also.



**Note:** If you enter or change a DNS address, restart the computers on your network so that these settings take effect.

